



All LINEMAN® Capstans Feature:

- Cooler operating temperatures
- Less wear on internal parts
- Continuous-use duty cycles
- Lower hydraulic requirements
- More compact designs
- Less maintenance



LINEMAN®

A Product of **dp**®
WINCH

P.O. Box 1130 • Jenks, OK 74037-1130
Voice: 918.298.8300 • Fax: 918.298.8301
www.team-twg.com

LINEMAN[®]

Capstans



Advanced Features. Superior Benefits.

Dual counterbalance cartridges

Provides capstan shaft with maximum load control in both directions.

Continuous duty brake and planetary gear design

Provides continuous operation without overheating.

AT&T output shaft (optional on the 4CDU)

Offers universal capstan head or reel attachment.

Two mounting configurations

Provides optimal installation flexibility.

Low-speed, high-torque motor

Delivers efficient, reliable operation.

Performance Data

4CDU Capstan Performance

| | Line Pull (lb) | Line Speed (fpm) |
|---|-------------------|---------------------|
| Capstan Drum Ø5/8" Rope | 1,500 | 235 |
| AT&T Shaft with Ø7" Capstan - Ø1" Rope | 1,150 | 313 |

Max. torque is 4,600 in.-lb @ 2,000 psi and 150 rpm @ 15 gpm.
Based on 15 gpm @ 2,200 psi.

4CDU Winch Performance

| Layer | Capacity (ft) | Line Pull (lb) | Line Speed (fpm) |
|-------|------------------|-------------------|---------------------|
| 1 | 20 | 1,600 | 223 |
| 2 | 42 | 1,470 | 242 |
| 3 | 66 | 1,360 | 262 |
| 4 | 91 | 1,270 | 282 |

Based on 15 gpm @ 2,000 psi with a Ø1/4" wire rope.

13, 16 and 24CDU Capstan Performance

| Model | Motor Option | Pressure (psi) | Flow (gpm) | Output Shaft | | 7" Capstan | | 20" C.R. Reel | | Dimension A |
|--------------|-----------------|-------------------|---------------|--------------------|----------------|-------------------|----------------|-------------------|----------------|----------------|
| | | | | Torque (in.-lb) | Speed (rpm) | Line Pull (lb) | Speed (fpm) | Line Pull (lb) | Speed (fpm) | |
| 13CDU | 1 | 2,300 | 15 | 13,000 | 58 | 3,250 | 121 | 1,300 | 304 | 16.03 |
| 16CDU | 1 | 2,200 | 18 | 16,000 | 51 | 4,000 | 107 | 1,600 | 267 | 16.14 |
| 24CDU | 1 | 2,500 | 20 | 24,000 | 45 | 6,000 | 94 | 2,400 | 236 | 16.25 |
| 24CDU | 2 | 2,250 | 25 | 24,000 | 58 | 6,000 | 121 | 2,400 | 304 | 18.00 |

Based on use with a Ø1" rope.

CAUTION:

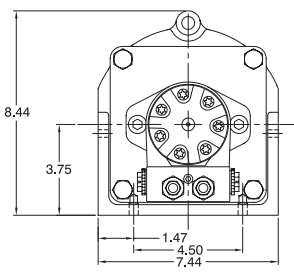
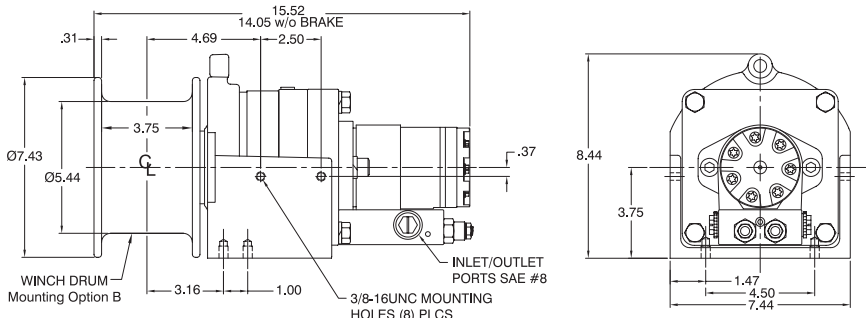
The last 5 wraps of cable must be left on the drum to assist the cable clamp in holding the load.

WARNING:

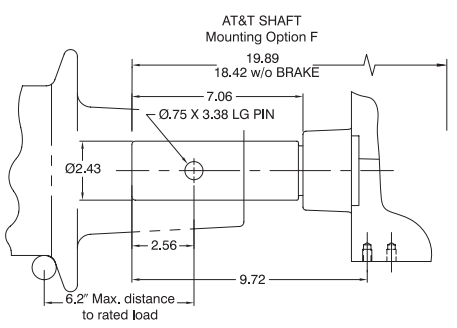
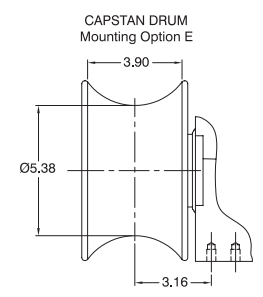
Winches and capstans are not intended to be used for lifting or moving of persons.

The rated line pulls are for the capstan and winch only. Consult the rope manufacturer for rope ratings.

Advanced engineering for reliable operation and extra long life.



OPTIONAL FEATURES



4CDU



Approximate weight 82 lb



13, 16 and 24CDU

Approximate weight 125 lb

